

## Stairs and platforms

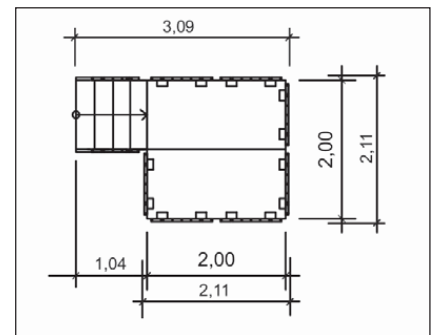
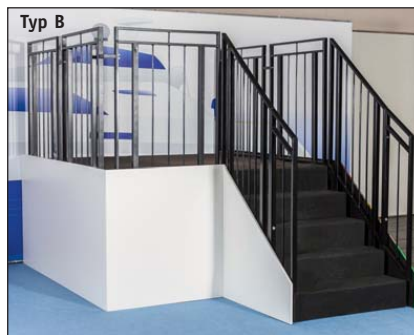
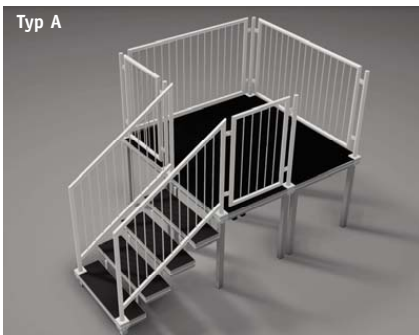
Deadline  
**26/02/16**

B 10  
 GB  
 2016

For incomplete documentations and all orders submitted less than 21 days before set-up time Messe Düsseldorf adds a surcharge of 35% on the fees.

Hall/Stand number

Ident-Nr.	Amount ordered	All stand construction dimensions must be divisible by 0.5!	Unit	Rental price per unit in € plus VAT
<b>Platform type A: stairs and platform with stainless steel railings, including covering with carpet in standard colour (2 x 2 m, height 1 m)</b>				
7861		Without side facing	each	1,786.05
7866		Side facing molleton (standard colour)	each	2,258.85
7867		Side facing synthetic material white	each	1,943.65
7868		Side facing mono-colour painted (standard colour)	each	2,101.25
7869		Higher than 1 m up to max. 2 m	per 20 cm	241.65
		Other colours and sizes on request subject to surcharge		
<b>Platform type B: stairs and platform with steel railings, black, including covering with carpet in standard colour (2 x 2 m, height 1 m)</b>				
7874		Without side facing	each	945.55
7876		Side facing molleton (standard colour)	each	1,418.35
7877		Side facing synthetic material white (standard colour)	each	1,103.15
7878		Side facing mono-colour painted (standard colour)	each	1,260.75
7879		Higher than 1 m up to max. 2 m	per 20 cm	189.10
		Other colours and sizes on request subject to surcharge		



- Keep clear a minimum space of 1m x 1m in front of the stairs.
- Platforms may only be installed on the hall floor. Should a raised floor be laid around the platform, make sure that all steps have the same height in the finished state. Should the customer request the stairs to be installed on a platform, appropriate load distribution must be ensured and if need be structural certification must be submitted.
- Exhibitors shall protect any transits to, and areas between, exhibits against falls from a height.
- Areas below platforms must not be used, not even for material storage purposes.
- A technical inspection of the platforms is included in the price. Additional inspections for other stand structures must be registered and paid for by exhibitors.



Order online! <http://www.oos.messe-duesseldorf.de> > Order Forms > Trade Fair Stand

We hereby order the following services for hire in accordance with the Conditions of Participation and Technical Guidelines.

Name of the company Street Postal code and place Country	Contact Telephone Telefax Email
Contractual partner and therefore recipient of the invoice shall always be the exhibitor.	
Company Stamp, date, signature	